



AS7056

e011\_AWS AS7056

e0115b0\_AWS AS7056 EVK\_Sensorboard7057

Variant standard



AS7056

Table of Contents

- Sheet 1: e0115b0\_AWS AS7056 EVK\_Sensorboard7057\_Title Page
- Sheet 2: e0115b0\_AWS AS7056 EVK\_Sensorboard7057\_Project Page (This page)
- Sheet 3: e0115b0\_AWS AS7056 EVK\_Sensorboard7057\_scm\_01 (AS7057)

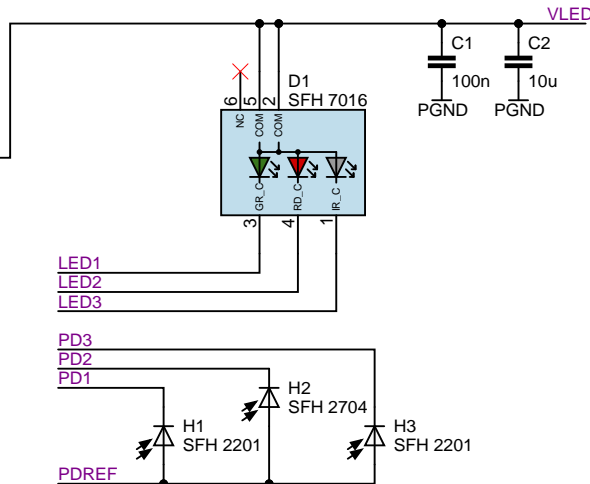
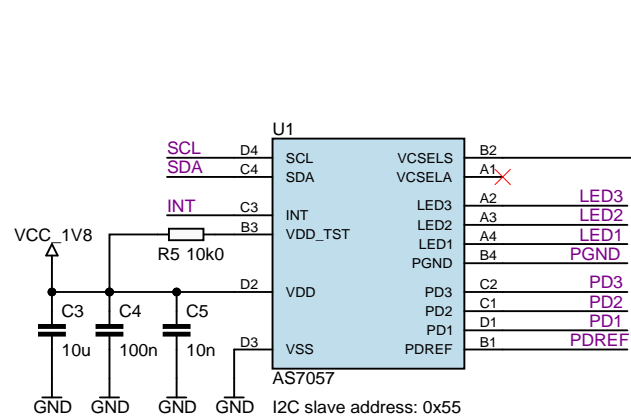
e0115b0\_AWS AS7056 EVK\_Sensorboard7057

Revision History

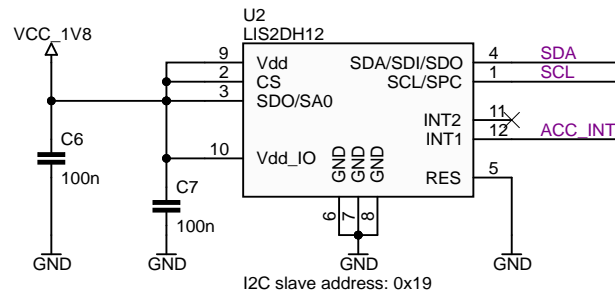
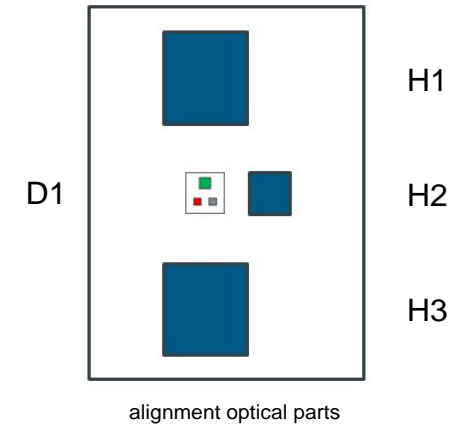
Rev 1.0.0: Initial Release	Release Date: 06/05/2021
Rev 1.0.1: Update Release	Release Date: 27/08/2021
Rev 1.1.0: Update Release	Release Date: 24/04/2023

Design Changes

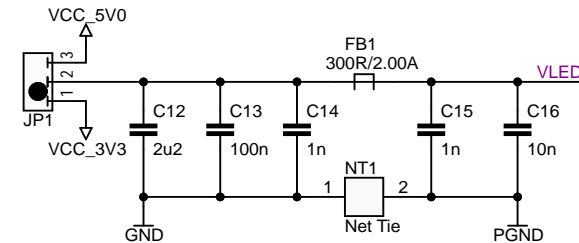
Rev 1.0.1: Update Release	change standoff (M1,M3) to M2x11mm change screw (M2,M4) to M2x4mm
Rev 1.1.0: Update Release	change VCSELS voltage



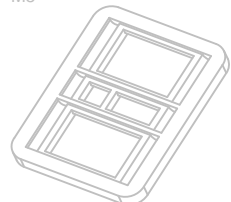
## Sensor Module – AS7057



set default: 2-3  
place R100 OR  
BF 1608



M5



e008oa0\_AWS AS7050 SMOD2201 frame

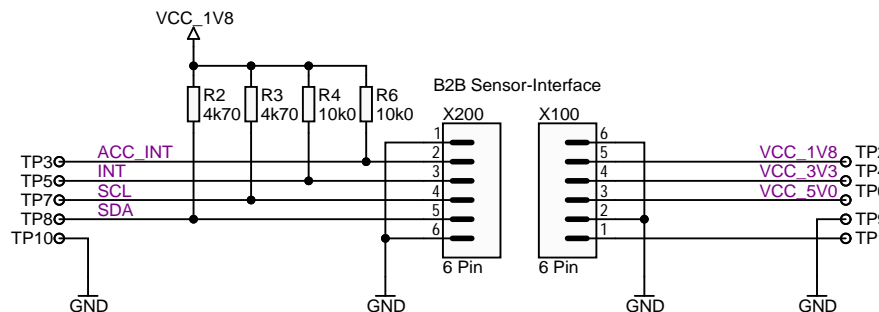
### Mounting material

M1 Nylon\_Standoff\_M2x11mm Threaded Screws ISO M2x4mm

M2 Nylon\_Standoff\_M2x11mm Threaded Screws ISO M2x4mm

M3 Nylon\_Standoff\_M2x11mm Threaded Screws ISO M2x4mm

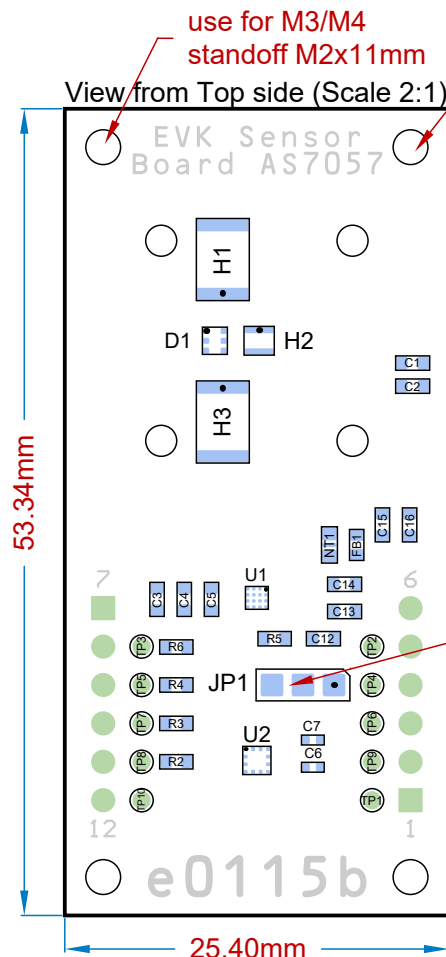
M4 Nylon\_Standoff\_M2x11mm Threaded Screws ISO M2x4mm



ams OSRAM

Confidential © ams AG

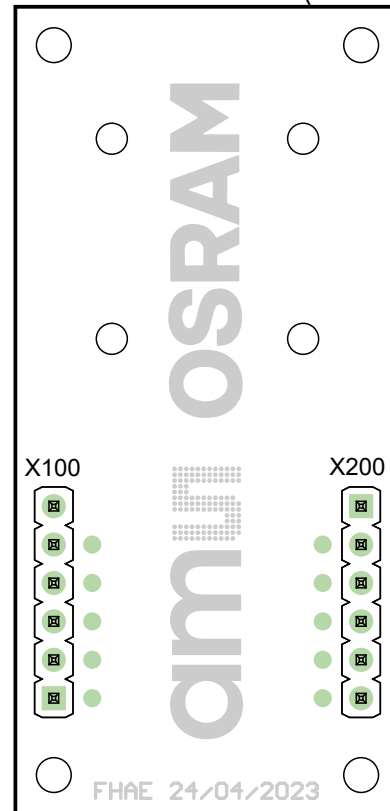
Product: AS7056 Variant standard  
PCB Name: e0115b\_AWS AS7056 EVK\_Sensorboard7057.PcbDoc Rev 1.1.0  
Application Engineer: MKNE Release Date: 24/04/2023  
Sheet Name: e0115b0\_AWS AS7056 EVK\_Sensorboard7057\_scm\_01.SchDoc  
Page Size: A4 Last Save Date / Time: 24.04.2023 / 11:14:43  
Project: e011\_AWS AS7056 Sheet 7 of 7



use for M3/M4  
standoff M2x11mm

use for M1/M2  
standoff M2x11mm

View from Bottom side (Scale 2:1)



e0115b\_AWS AS7056 EVK\_Sensorboard7057.PcbDoc PCB Spezifikation:

- ① 1.5mm  $\pm 10\%$  HDI 4-Layer FR4 (MLL4)
- ② manufactured with IPC Claas 2
- ③ Technology: 150 $\mu$ m TrackWith/TrackTrack  
smallest drill: 100 $\mu$ m
- ④ Layer stack: see Würth HDI4\_1-2-1\_149\_35\_V2.12.pdf
- ⑤ outline is milled and v-cutted
- ⑥ finished surface is ENIG
- ⑦ Silkscreen color is white and made in high resuluion (more than 200 $\mu$ m)
- ⑧ Solder Mask color is green standard
- ⑨ check Gerber files against the IPC-D-356A.ipc netlist file
- ⑩ Questions to:  
ams Sensors Germany GmbH  
Fernando Hädrich  
e-mail:  
fernando.haedrich@ams.com  
Phone: +49 3641 280935

Drill Table

Symbol	Count	Hole Size	Plated	Hole Tolerance
✕	19	0.10mm	Plated	
⊕	37	0.15mm	Plated	
▽	10	0.80mm	Plated	
⊗	12	1.10mm	Plated	
□	4	2.15mm	Non-Plated	
○	4	2.40mm	Non-Plated	
	86 Total			



Confidential © ams AG

Product: AS7056

Variant standard

PCB Name: e0115b\_AWS AS7056 EVK\_Sensorboard7057.PcbDoc Rev 1.1.0

Application Engineer: MKNE

Release Date: 24/04/2023

Sheet Name: e0115b0\_AWS AS7056 EVK\_Sensorboard7057.PCBDwf

Page Size: A4

Last Save Date / Time: 24.04.2023 / 11:14

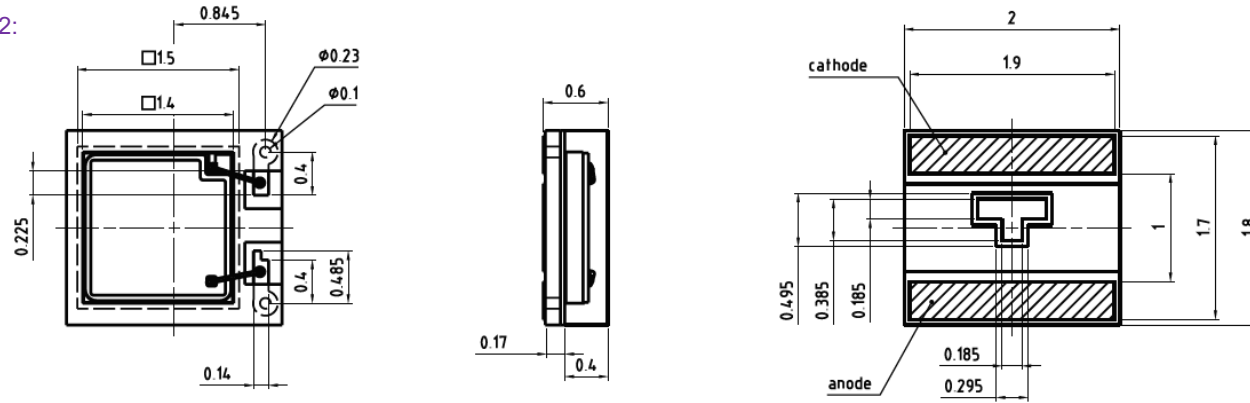
Doc. Scale:

Project: e011\_AWS AS7056

Sheet 1 of 2

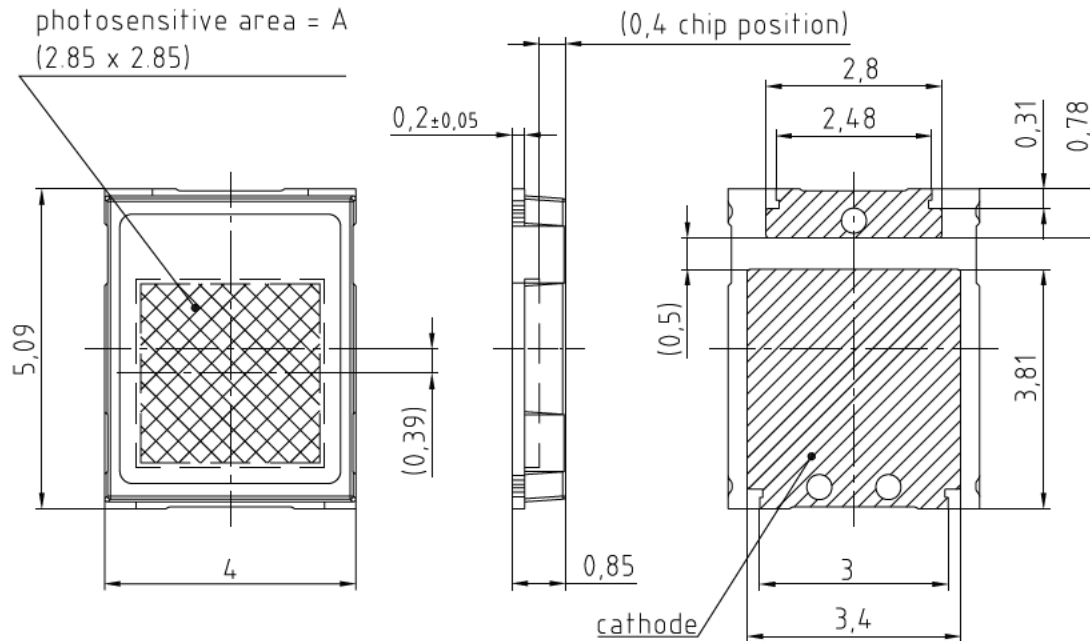
1:1  
Millimeters

H2:



H1 und H3:

photosensitive area = A  
(2.85 x 2.85)



**am** **OSRAM**

Confidential © ams AG

Product: AS7056

Variant standard

PCB Name: e0115b\_AWS AS7056 EVK\_Sensorboard7057.PcbDoc Rev 1.1.0

Application Engineer: MKNE

Release Date: 24/04/2023

Sheet Name: e0115b0\_AWS AS7056 EVK\_Sensorboard7057.PCBDwf

Page Size: A4

Last Save Date / Time: 24.04.2023 / 11:14

Doc. Scale:

Project: e011\_AWS AS7056

Sheet 2 of 2

1:1  
Millimeters

Top Overlay

# EVK Sensor Board AS7057

H1

D1

H2

H3

U1

7

6



JP1



U2

12

1

e0115b

Top Paste

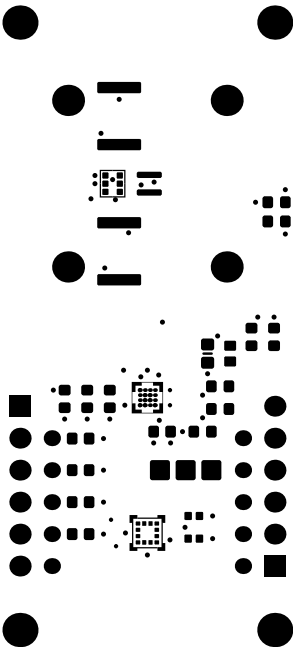


none black solder top

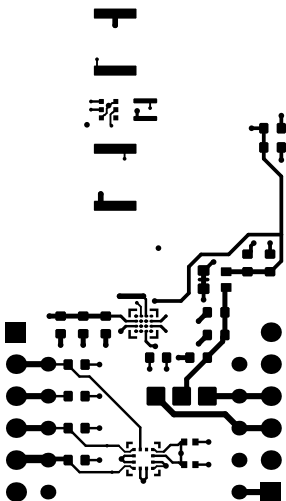




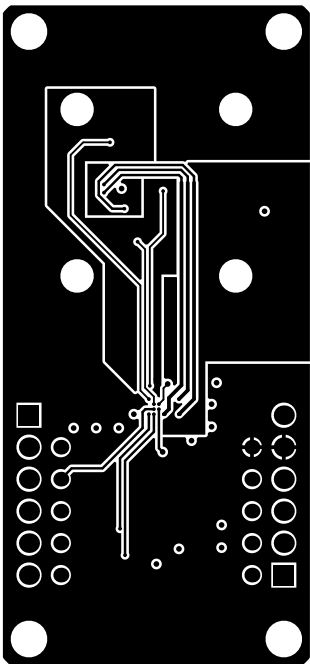
# Top Solder

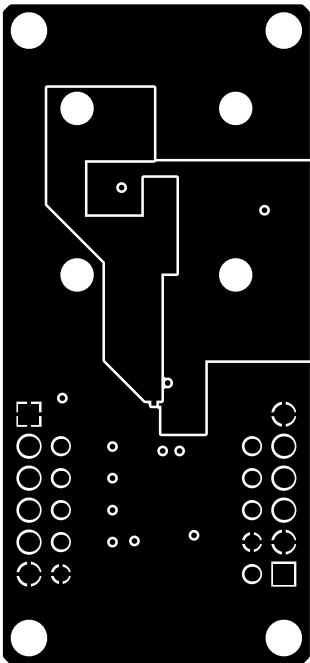


# Top Layer

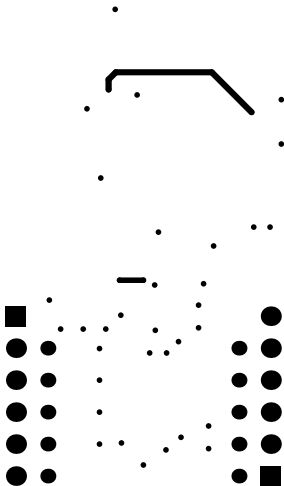


Inner 1

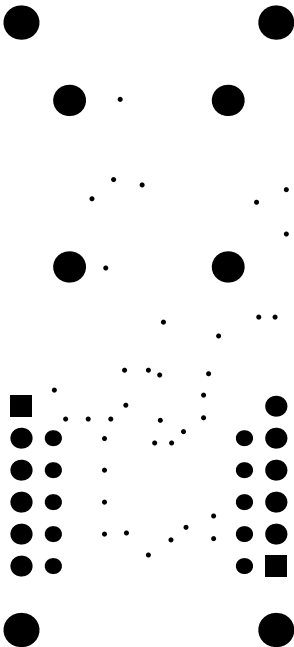




# Bottom Layer



Bottom Solder



none black solder bottom

Bottom Paste



MASO

2m

X100



X500



# Board Outline

